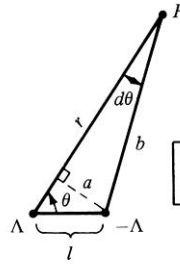
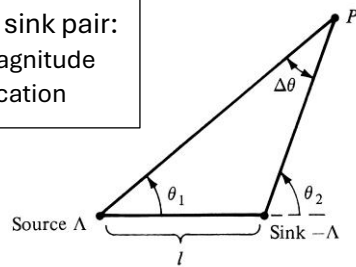


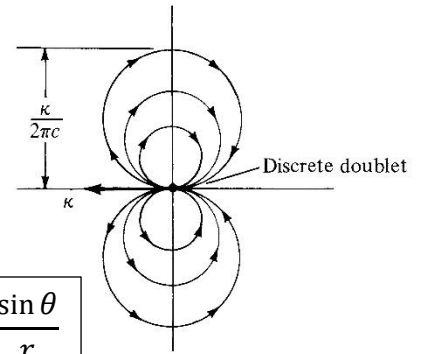
(KEY CONCEPT) [B-3-6]

Source and sink pair:

- Equal magnitude
- Same location



$$l \rightarrow 0 \\ l\Lambda = \kappa$$



Doublet flow with magnitude κ : $\psi = \frac{\kappa \cos \theta}{2\pi r}$ and $\phi = -\frac{\kappa \sin \theta}{2\pi r}$

Potential flow field simulation (source: J.D. Anderson "Fundamentals of Aerodynamics" 2016)

Lined area for notes, consisting of multiple horizontal dashed lines.