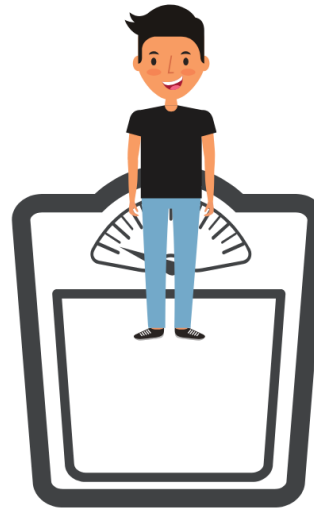
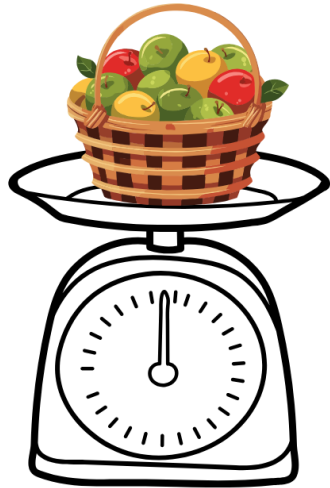


(EXAMPLE) [A-1-1]



Suppose ... you go to a grocery store and measure a bunch of fruits. The scale measures 15 "pounds." Does this mean 15 "pounds-mass" (lbm) or 15 "pounds-force" (lbf or "lb")? Also ... you measure yourself. The health scale measures 85 "kilograms." Does this mean 85 "kilograms-mass" (kg) or 85 "kilograms-force" (kgf)?

Lined area for notes, consisting of multiple horizontal dashed lines.